



practice.



To ensure that Deer Park continues to be a vehicle for the transmission and translation of Buddhist teachings, Yangsi Rinpoche, a young, highly accomplished scholar, has been appointed future abbot and director of Deer Park Buddhist Center.



Deer Park's four resident teachers from left to right: Yangsi Rinpoche, Geshe Sopa, Geshe Thapkey and Geshe Jampa.

It will be a place for community.

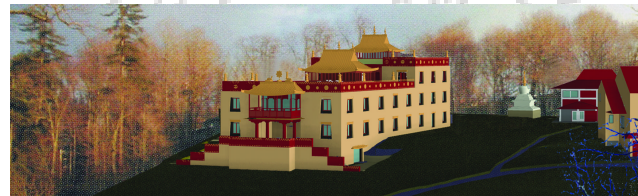


The Deer Park community with his Holiness the Dalai Lama.

Deer Park welcomes all who wish to participate. To ensure that Deer Park remains a place for people of all ages to experience the source of peace and enlightenment, please offer your support for the new temple.

Your gift of funds or materials will benefit present and future generations. Deer Park is a non-profit 501C3 organization supported solely by volunteers. All donations are fully tax deductible.

We thank you for your generosity.



A rendering of Deer Park's proposed temple.

The Temple Project at Deer Park

Tax-deductible contributions may be sent to:
 Deer Park Buddhist Center
 4548 Schneider Drive
 Oregon, Wisconsin 53575
 For more information please contact us at:
www.deerparkcenter.org



The new temple will be more than just a building..



The Temple Project at Deer Park

Deer Park Buddhist Center
 Oregon, Wisconsin

May the teachings that are the true medicine for the suffering of sentient beings and the source of permanent peace and joy be materially supported and appropriately honored. May they abide for a long, long time.

Shantideva, A Guide to the Bodhisattva's Way of Life



It will be a place for...

Geshe Lhundub Sopa, abbot and director of Deer Park Buddhist Center and Monastery, invites you to join us in offering your support for a new temple where all individuals - monks, nuns, and lay people - can engage in the timeless elements of Buddhist practice.

Located in a peaceful, rural setting south of Madison, Wisconsin, Deer Park is an ideal environment for every aspect of Buddhist practice. Students gather from all over the world for intensive study of the great philosophical treatises led by some of the finest Tibetan Buddhist teachers including Geshe Sopa, Sera Jhe Abbot Geshe Donyo, Lama Thubten Zopa, and on special occasions His Holiness the Dalai Lama. Weekly classes, bi-weekly worship ceremonies, and numerous group meditation retreats are offered regularly at the center. The new temple will provide an environment that is deeply needed in our daily lives: a place for all people to come and experience the benefits of learning, contemplating and meditating on the Buddha's teachings.

... giving.

Geshe Sopa is recognized worldwide as one of the greatest living masters of the Tibetan tradition. After attaining the highest academic achievements of the 20-year Sera Jhe monastic program, Geshe-la fled from the Chinese invasion of Tibet in 1959. Shortly thereafter, Geshe-la was encouraged by His Holiness the Dalai Lama to move to the United States, where he settled in Madison, establishing Deer Park as one of the first Tibetan Buddhist centers in the country.

Deer Park's existing small temple was built in 1981 as a temporary open-air pavilion for the first Kalachakra initiation ever to be offered by his Holiness the Dalai Lama in the West. The pavilion was later enclosed to serve as a temple with seating capacity for 70 people.



Aerial view of Deer Park showing, from left to right: the proposed new temple, the stupa, the original pavilion, the residential annex and the main house.

Geshe Sopa continues to dedicate his life to teaching the Buddhadharm. He frequently travels overseas to share his spiritual knowledge and has enjoyed a distinguished 30-year career as professor of Buddhist studies at the University of Wisconsin-Madison. His students include many prominent western scholars, Tibetan monks who have become eminent teachers and abbots, reincarnate lamas, as well as thousands of ordinary people who have taken his spiritual advice to heart.



The new temple will form the centerpiece of Deer Park's effort to preserve and effectively transmit the Buddhadharm. It will stand as a landmark of Tibetan culture in the heartland of America.

... growth.

The heart of the new temple will be a two-story assembly hall with seating for 300 people and overflow space for large events and traditional Tibetan celebrations.

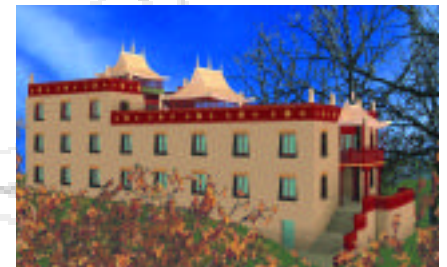
The design of the new temple will blend traditional Tibetan architecture with contemporary sustainable design. Two roof-top pagodas, traditional murals, and Tibetan carpentry will ornament a building featuring radiant floor heating, a ventilated stone facade, natural clerestory light and an extensive growth roof with solar panels.

A multi-media library adjacent to the assembly hall will provide access to Deer Park's vast collection of texts, videos, and recorded teachings.

On the lower level, classroom space will provide Tibetan children the opportunity to learn their native language and the Buddhist culture that is essential to the continuation of their Tibetan heritage.

A large kitchen and dining area with glass doors will connect the lower level to an outside garden. On the upper floors, visiting teachers will find comfortable guest quarters.

An estimated \$2.3 million is needed to construct our new temple. Please offer your generosity so that Geshe Sopa's vision for a lasting spiritual center may be successfully fulfilled.



Top: Buddha Maitreya, statue for the new temple altar. Bottom: Rendering of the proposed temple seen from the west.